



Glow!

ENCOURAGING · EQUIPPING · EMPOWERING
Moms-to-Be in Fresno County

Christy Oberholtzer, RN, MPH

Clinical Research Manager

Central Valley Health Policy Institute, Fresno State



87% increase in infant mortality among African American families from 2009-2013

Infant Mortality Rate: 25.3/1000 compared to
8.1/1000 among White families

Fresno County, Department of Public Health- Vital Statistics, 2009-2013

African American Infant Mortality Report

Qualitative Analysis

Women in Fresno experience:

- Day-to-day practical challenges (lack of transportation, flexible jobs, education opportunities, unsafe neighborhoods, etc.)
- Little to no social support, community is a source of judgement
- Substantial maternal stress
- Socio-economic differences in quality of care and experiences at clinics
- Extensive experience with pre-term birth
- Neighborhoods that can be violent, lack social resources and healthy food outlets

Women in Fresno need:

- Education and encouragement focusing on self-care, both mental and physical
- Resources to mitigate impacts of poor neighborhood and environmental health
- Guidance navigating social services
- Community leaders to challenge systems that perpetuate racism and classism on their behalf
- Social cohesion

Literature Review

Mixed Results

- Findings indicate that the range of efficacy, cost-savings and generalizability of GPNC vary tremendously
- Adverse perinatal outcomes affected by GPNC varies by study, and the mechanism by which the program impacts these outcomes is not known
- A 2016 meta-analysis (four randomized controlled trials and ten observational studies) concluded that the rate of preterm birth was not significantly different with GPNC compared with traditional care

Communities of Color

- Experts note that not enough evidence is available regarding the effect of GPNC on communities of color or in patient populations that are considered high risk as a result of maternal health
- The only study that explored the impact of GPNC on a minority population found that though participants had higher health care utilization, there was no difference in PTB or low birth weight for Latina women
- The study authors suggested that a randomized control trial should be conducted with women of color to eliminate selection bias

Gareau S, Lòpez-De Fede A, Loudermilk BL, et al. Group prenatal care results in Medicaid savings with better outcomes: a propensity score analysis of CenteringPregnancy participation in South Carolina. *Maternal and child health journal* 2016;20:1384-93.

Carter EB, Temming LA, Akin J, et al. Group prenatal care compared with traditional prenatal care: A systematic review and meta-analysis. *Obstetrics & Gynecology* 2016;128:551-61.

Trudnak TE, Arboleda E, Kirby RS, Perrin K. Outcomes of Latina women in CenteringPregnancy group prenatal care compared with individual prenatal care. *Journal of Midwifery & Women's Health* 2013;58:396-403.

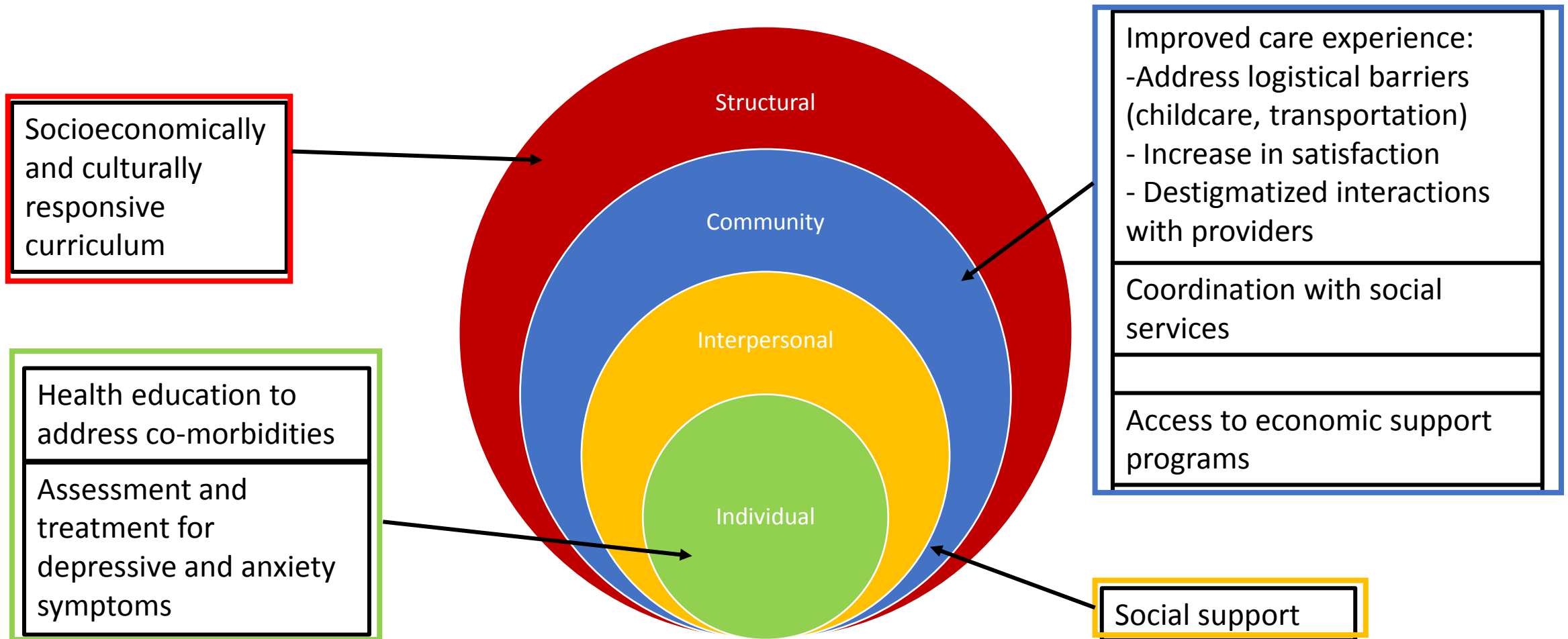
Glow!

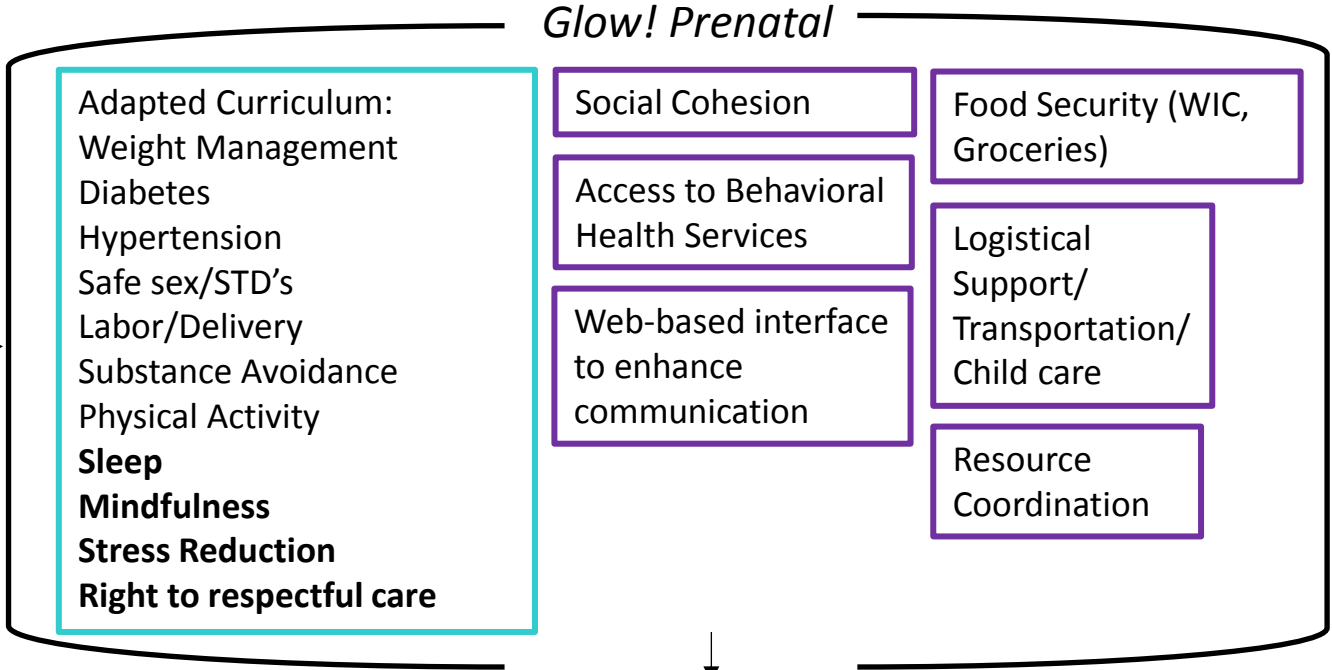
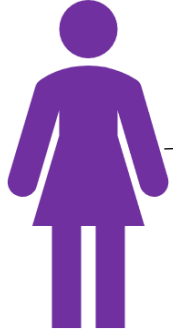
Group Prenatal Care and Support

A Feasibility Study

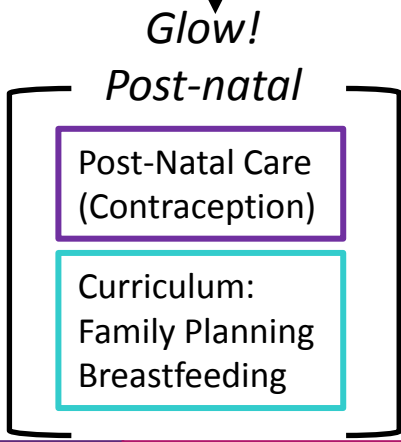


Glow! Socio-Ecological Conceptual Framework



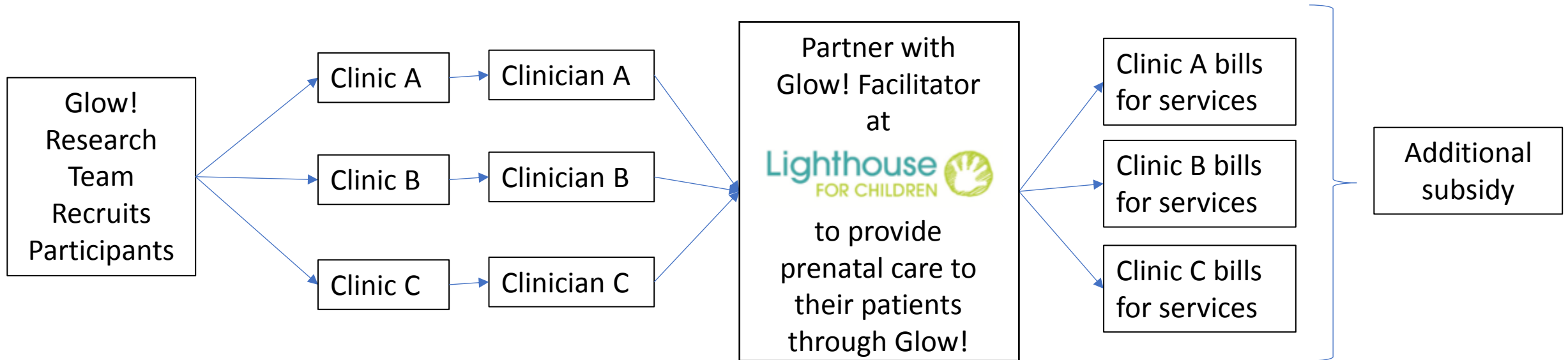


Improved Maternal and Infant Health Outcomes



Delayed subsequent pregnancies and Improved health status

Hub and Spoke Model



Challenges and Barriers to Feasibility

Glow! Participant Demographics

Age Group	Percent
<18	3.1%
18-24	39.2%
25-34	43.8%
35-44	13.8%

Country of Birth	Percent
US Born	63%
Mex	32.6%
Other	2.8%
Not specified	1.5%

Glow! Participant Demographics

Race	Percent
Hispanic	70.9%
Black/African American	10.4%
White (Non-Hispanic)	6%
Multiple Races	6%
Hmong	2.2%
Other Asian	2.2%
Prefer not to answer	2.2%



Glow! Participants Data



Prior Co-Morbidities	Percent
Pre-eclampsia	5%
Diabetes	11%
Hypertension	11%
Previous PTB	21%
Previous C-section	36%

Participant Feedback

"Glow! makes you feel more present and have more of a direct role in your pregnancy."



"Glow! has helped me be more interactive in my pregnancy, made me love my partner more, and has affected relationships. It helps me to think about the things you need to be looking out for and what you should be taking care

"The program makes me feel more accountable about



Participant Feedback



"It has been really great to be able to hear about the experiences of other moms and to be around people that are going through the same thing. It feels like they just get it and I don't feel isolated."

"The material we cover helps us learn what we need to see, like mindfulness. This isn't something that Black women normally talk about, so it's helpful to have a space to discuss this topic that we aren't exposed to."

What's next?

Comparing Approaches to Enhanced Prenatal Care to Improve Maternal and Child Health in Central California

Research Beyond Glow! Feasibility

PCORI: Patient Centered Outcomes Research Institute

PCORI funds studies that can help patients and those who care for them make better-informed healthcare choices.

“This is the type of quality research initiative for which PCORI was created.”

Comparative Effectiveness Study

2600 MediCal eligible women

Receiving prenatal care through group care with Glow! or individual care with CPSP

- **Aim 1: Preterm birth** and gestational age at delivery
- **Aim 2: Depression** and anxiety symptom severity
- **Aim 3:** Perceptions of respectful/disrespectful care and satisfaction with care

Funders and Stakeholders



Their Future First



Central Valley Health Policy Institute



UCSF California
Preterm Birth
Initiative



Glow!

ENCOURAGING · EQUIPPING · EMPOWERING
Moms-to-Be in Fresno County



Fresno Medical
Education Program
School of Medicine



Providers
Glow! Alumni



Thank you!

Questions?

